

# boost be<sup>+</sup>

## Manufacturing Operations Analysis Solution

BoostBe+ is an advanced factory solution that produces products tailored to customer needs. It integrates IoT, AI, and big data to enable automation and digitization, going beyond traditional factory automation.

BoostBe+ features objects related to manufacturing, such as procurement, logistics, and consumers. These objects are equipped with intelligence and linked via IoT to power seamless data connection, collection, and analysis for autonomous operations.



RPT

## Reporting system of data

## Field-oriented Optimized service



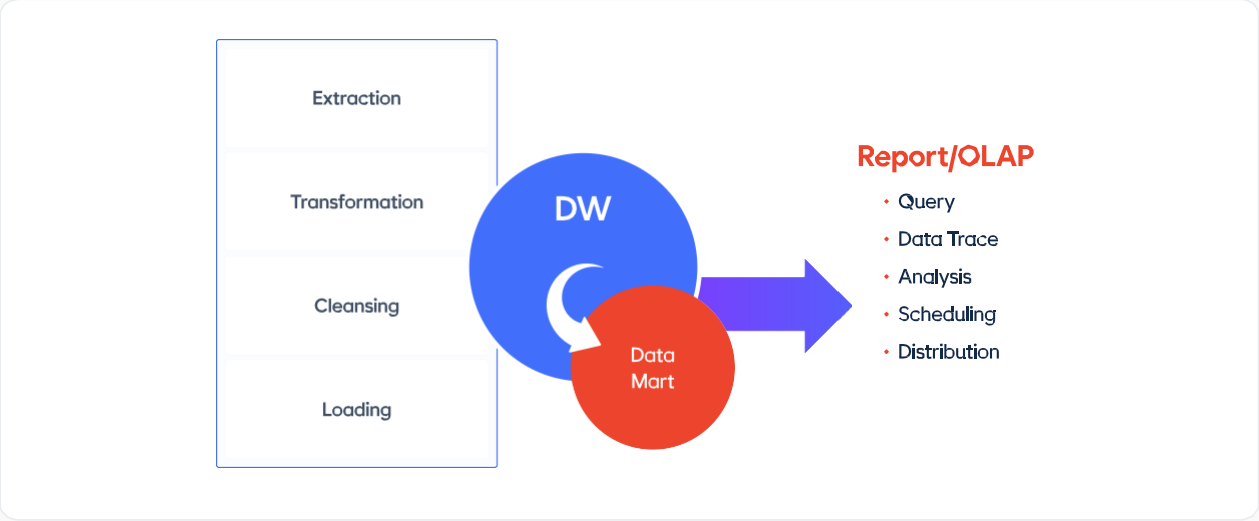
### What does it do?

**boostbe+ RPT** is a system that collects and processes production, equipment, and quality management data generated by MES or related production systems, providing information in the desired format for users.

- 1. DW and DM for manufacturing data:** aimRPT builds and manages structured Data Warehouses (DW) and Data Marts (DM) for systematic management of manufacturing data.
- 2. Interface and data sharing hub system:** Acts as a central hub for interfacing and sharing data with related systems
- 3. Manufacturing status and production reports:** Provides real-time manufacturing status and production data in report format.
- 4. Analysis reports based on collected and processed data:** Processes collected data to deliver detailed analysis reports, supporting process and quality improvement efforts.

Database

- Combines ODS and EDS areas for easy data access and reuse.
- Facilitates the creation of efficient Data Marts to support both standard and non-standard reports.
- Provides summaries for standard reports.



- **Collection of manufacturing data:** Gathers manufacturing data generated from OLTP systems into the Manufacturing Data Warehouse (MDW).
- **Task execution:** Executes workflows to collect master data, operational data, and measurement data.
- **ETL scheduler:** Runs ETL tasks at scheduled intervals set by the ETL scheduler.

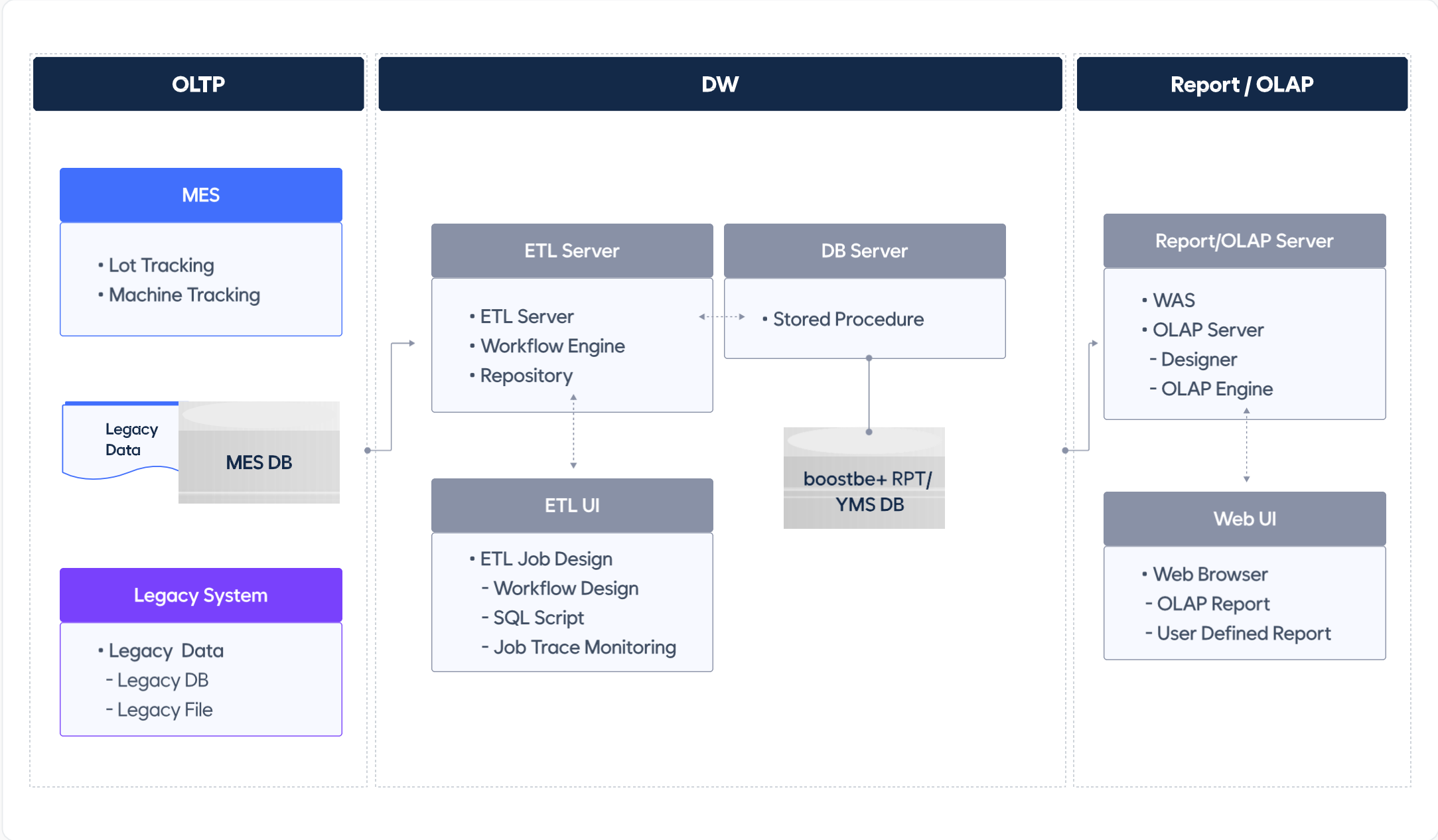


- **Data mart building:** Transforms and summarizes raw data collected to build Data Marts.
- **Optimized DB schema:** Reduces overhead during data mart formation by utilizing a DB schema tailored to aimMES.
- **Efficient data marts:** Leverages ETL tools and DB procedures to create efficient data marts.



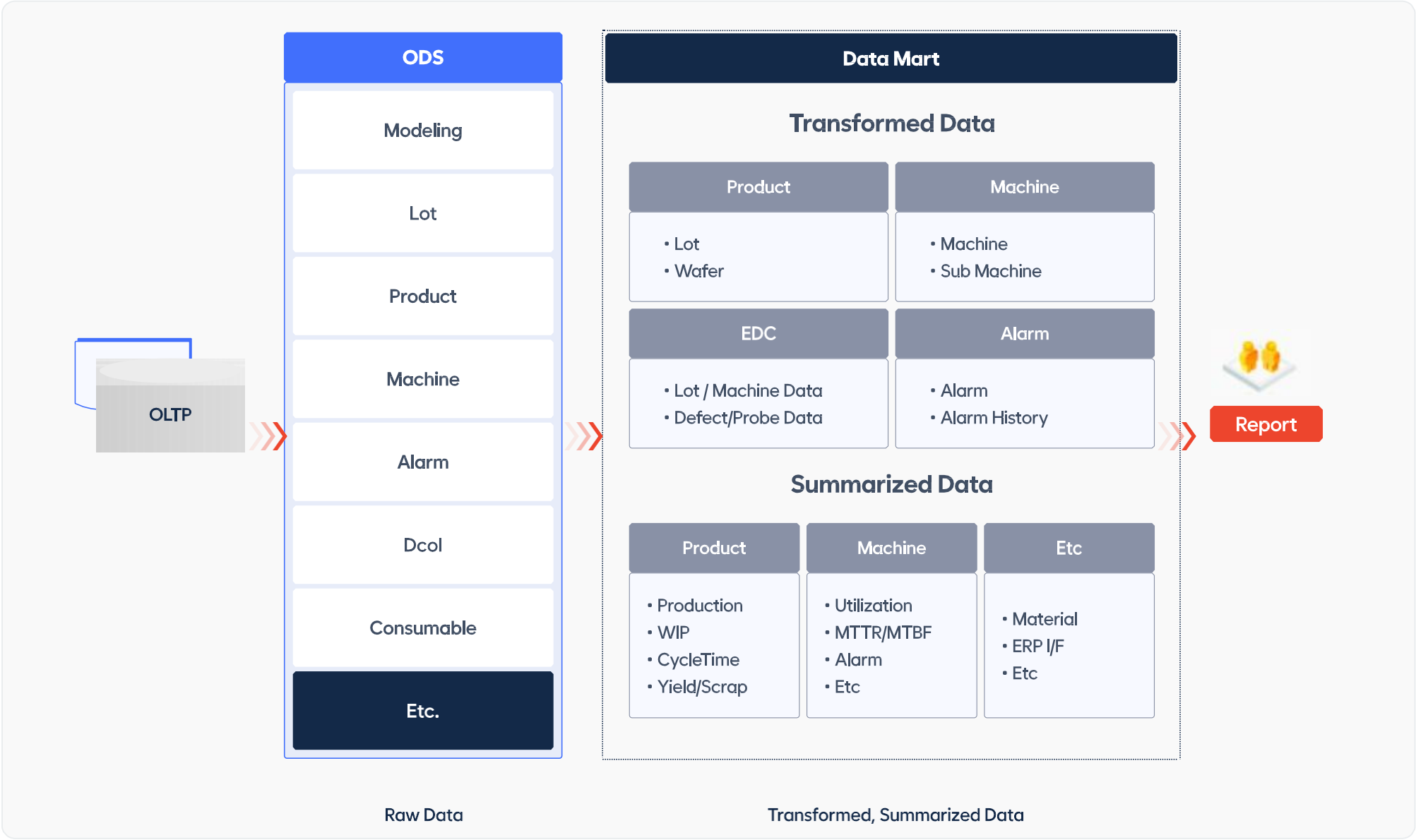
- **Data query using report UI:** Allows users to access and view data mart content through an intuitive report UI.
- **Basic reports in boostbe+ RPT:** Provides fundamental reporting functionality within aimRPT.
- **Analytical reports created using OLAP tools:** Supports in-depth analytical reporting using OLAP tools.

Product Configuration

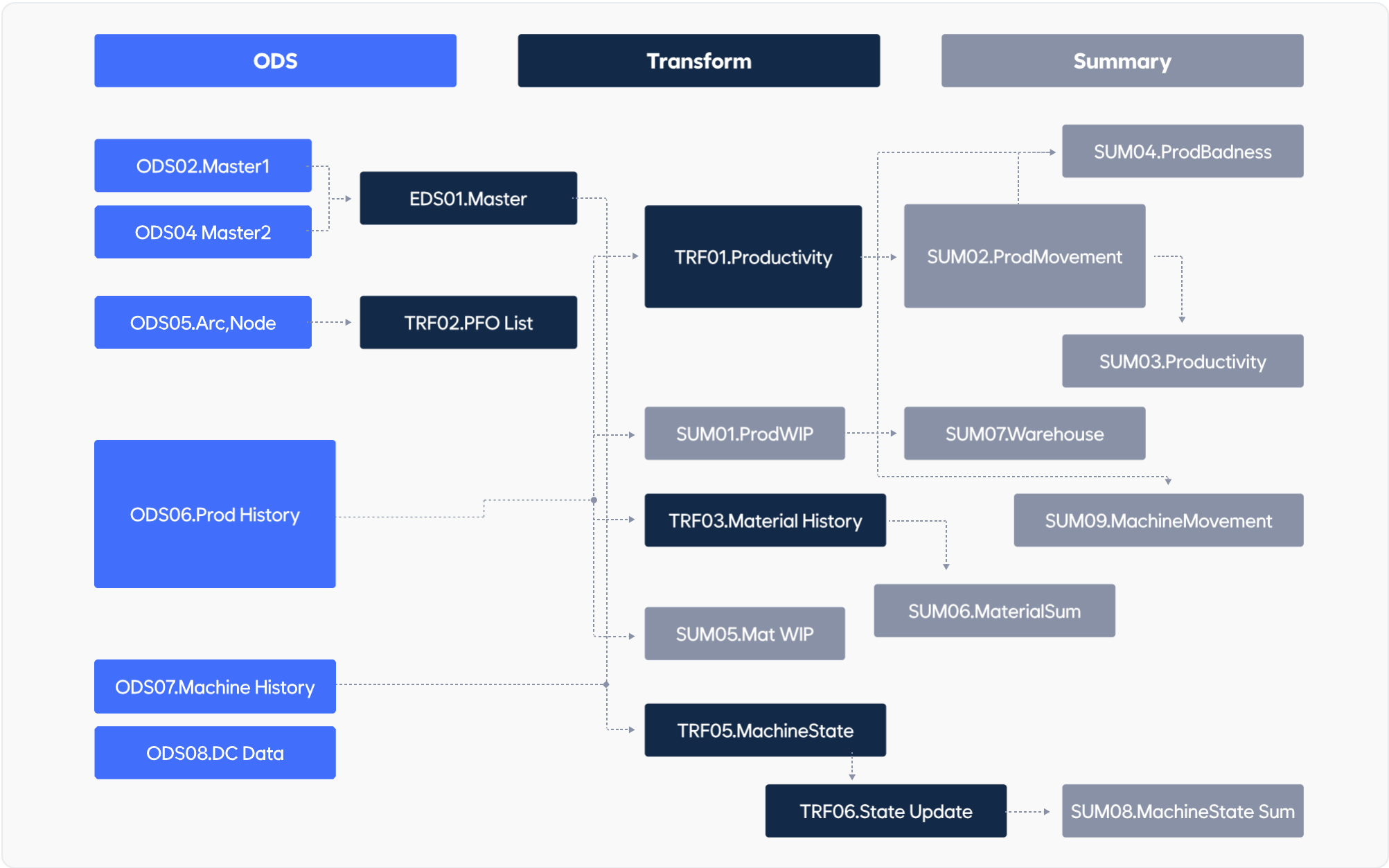


# Field-oriented Optimized service

## 01 Data Configuration

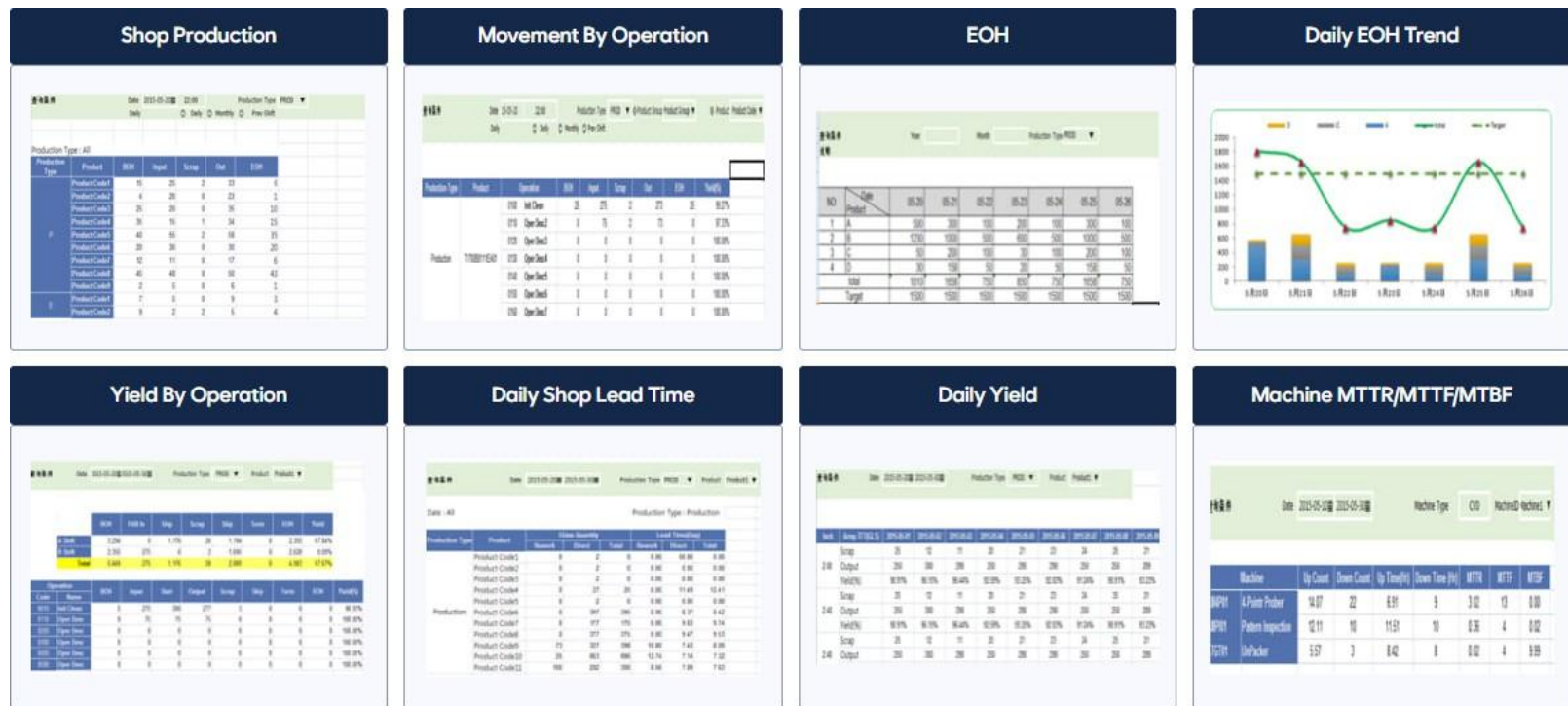


## 02 ETL : Job Relation

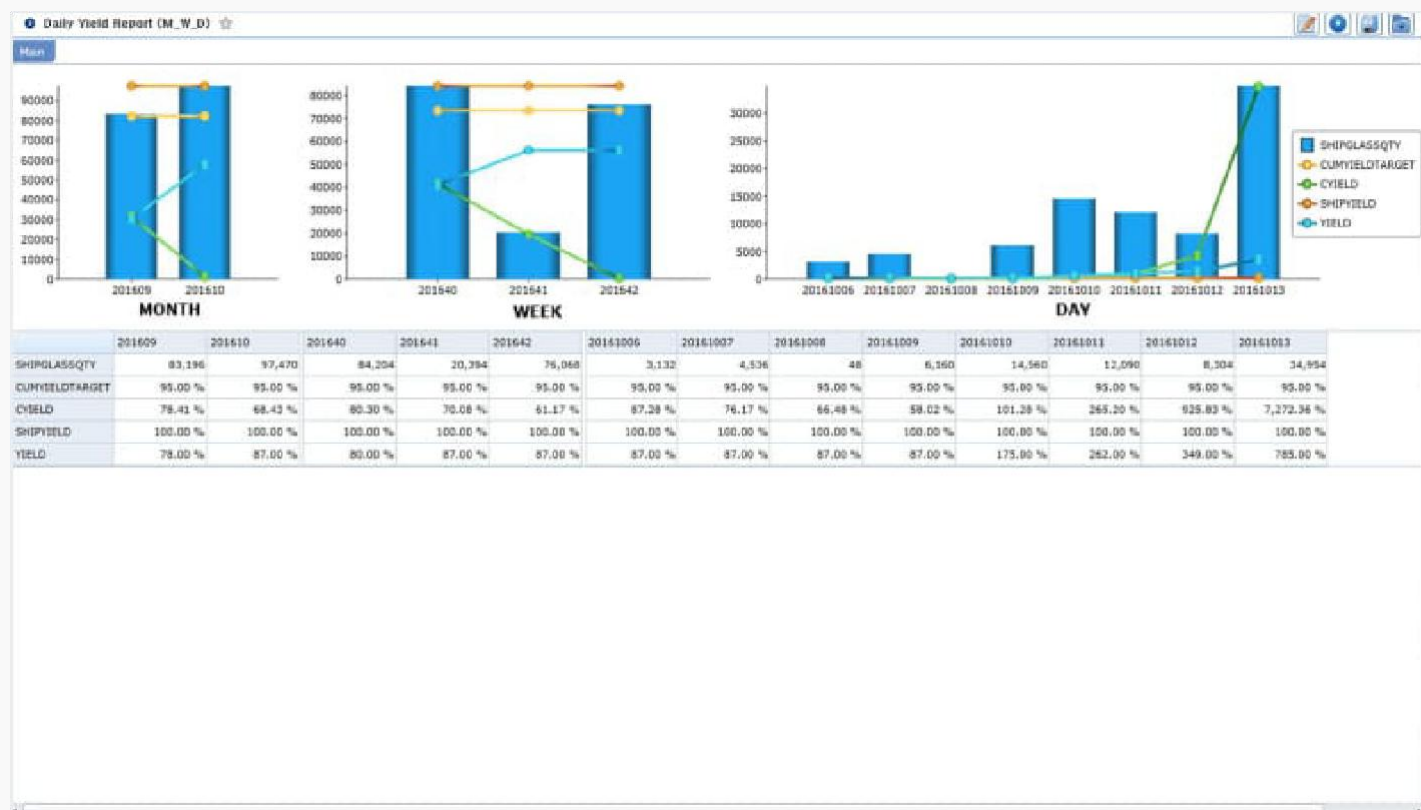




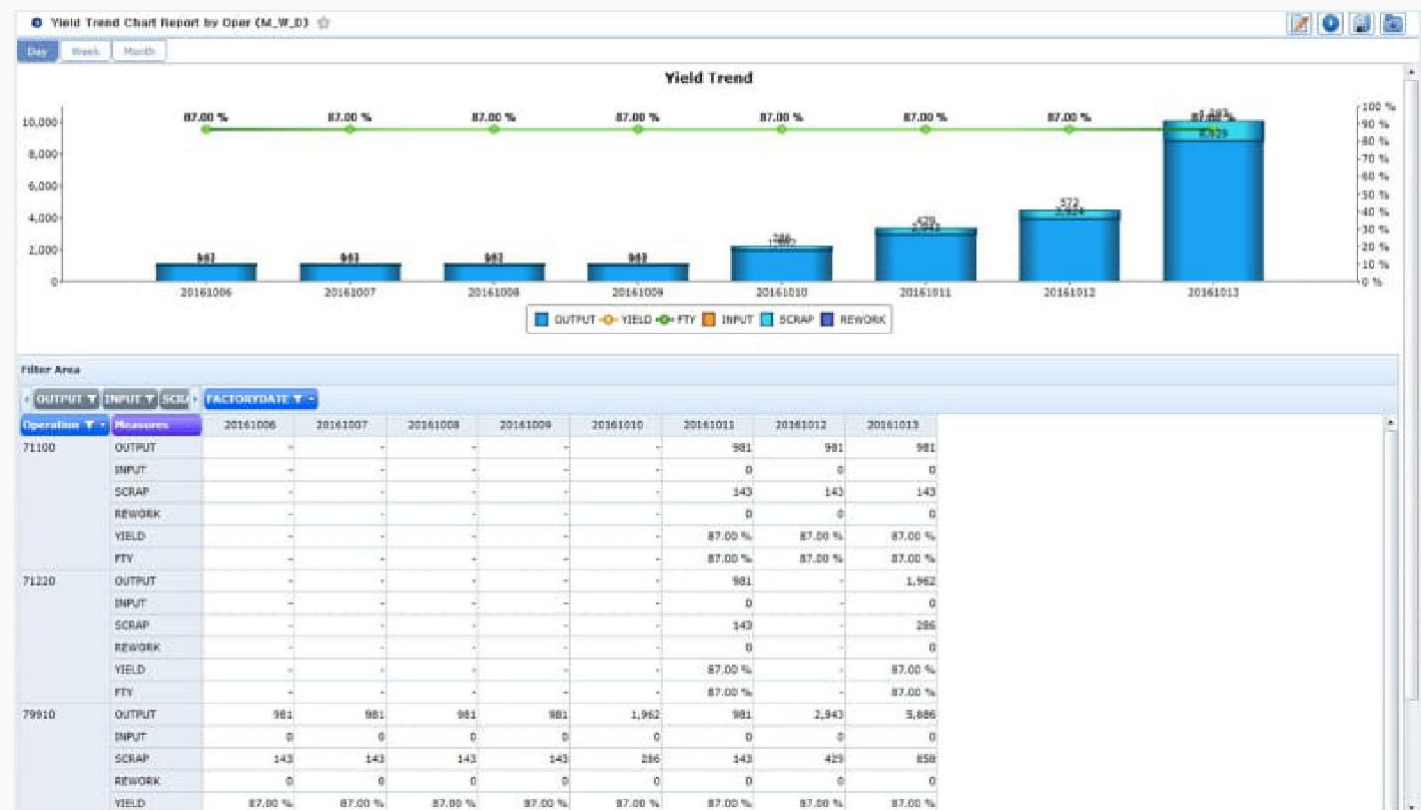
### 03 Report Sample



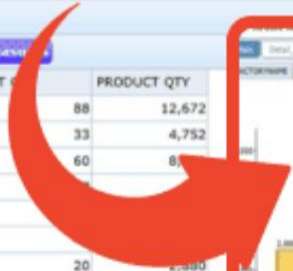
### 04 Report Sample : Daily Yield Report by Monthly/Weekly/Daily



### 05 Report Sample : Yield Trend Chart by Operation



## 06



## 07

